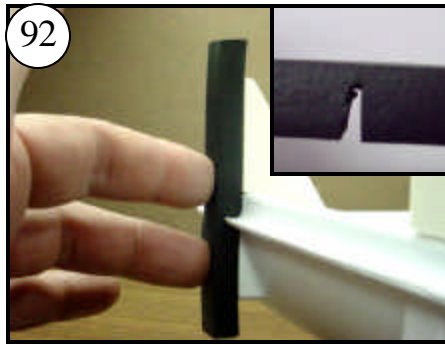
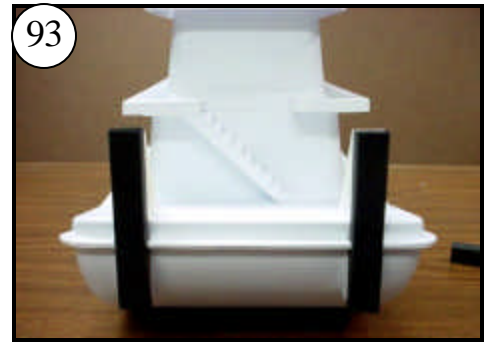




91 Pads for the Push Knees are cut by pressing a hobby knife or razor straight down through it. One side is slightly wider than the other. (Top of inset photo) Glue wider side to Push Knee.



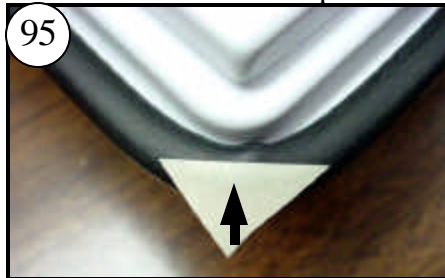
92 Cut a piece 1 inch longer than the height of the Push Knee. Notch it for the flange as shown in the inset photo. If you cut wrong, enough is included for 4 pads!



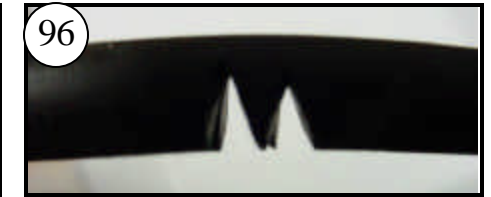
93 Mark each end and trim carefully. Test fit first, then glue the Pads to the Push Knees with medium CA.



94 Cut a short piece of Rub Rail and press between the two Push Knees.



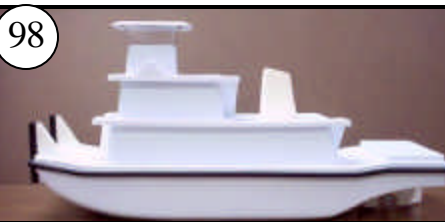
95 Locate the center of the Rub Rail. Begin at the middle of the stern and work it onto the Hull Flange. At the corners, mark each corner with a piece of tape for notching.



96 Each corner must be notched twice. Space between the notches determines how rounded the corner will be. Close like this will make a sharp corner. Practice with scraps until you make a good tight rounded



97 If you cut the rail short, grip and pull it sliding your fingers along the rail. It will stretch a little. Turn the corner at the Bow, trim with scissors, clamp with CA to the Hull Flange.



98 The structure is complete. Now you need to properly ballast the boat. You will need lead shot, BBs, or any small heavy metal to increase the weight of the hull so it will sit lower in



99 Set the boat on a flat surface. Put masking tape on each side as shown, to mark the waterline. Measure 1-3/4" (44mm) up from the table and mark the tape.



100 With all battery and radio gear installed, set the boat in a container of water. Add ballast weight to the Ballast Cups until the water line matches the 4 marked points.



101 Pour the shot into a plastic bag. Add just enough epoxy to coat the shot. Knead until coated and pour back into the ballast tray. Secure each tray to the inside of the hull with a piece of velcro.

You are done! Once the paint is fully cured, attach the decals. Instructions are on the back of the "Tips & Tricks" page. Tape your antenna wire to the inside of the deck cabin. For better range, put the antenna wire into a straw or tube and stand upright inside the cabin.

Now go find some water and have fun! 12