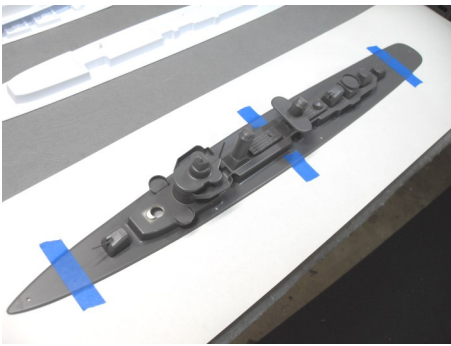
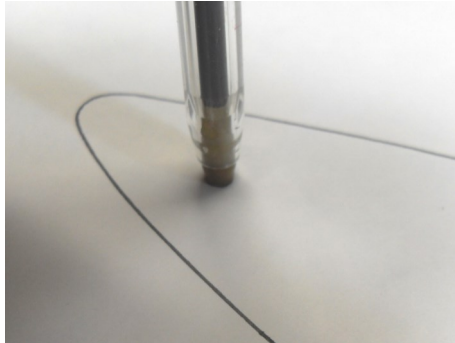
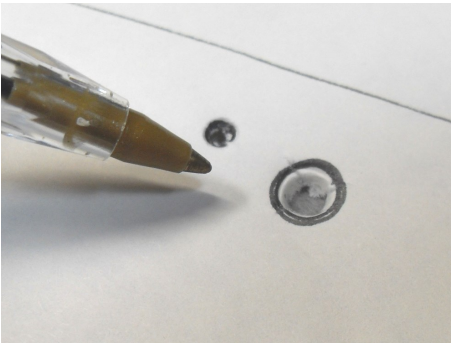


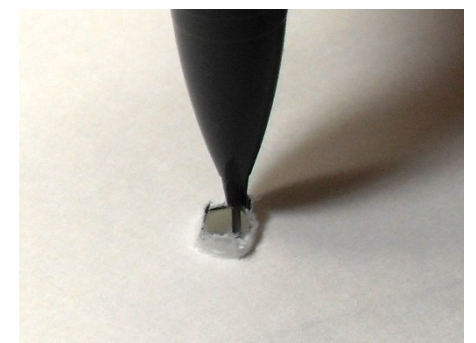
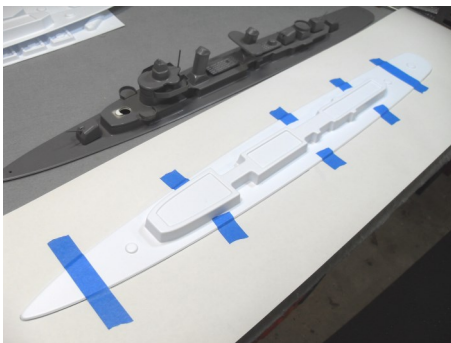
Transferring Deck Hole Pattern to a Replacement Deck.



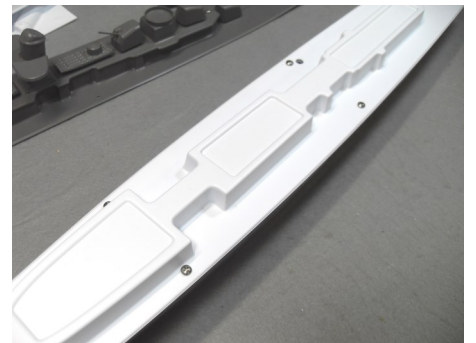
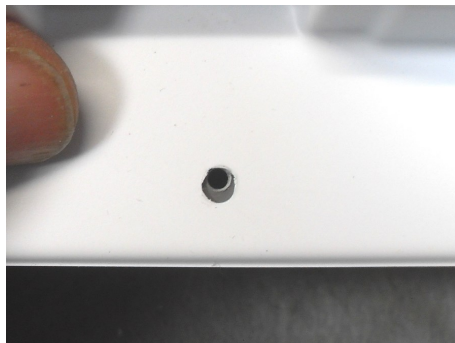
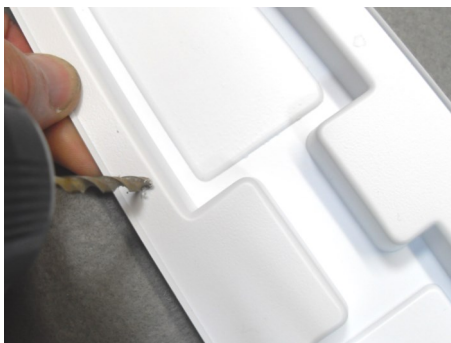
Make a sheet of paper as long as the deck. Tape the original deck to that sheet. Trace the perimeter of the deck then mark all deck holes on the paper. Remove the original deck.



Backed with a scrap of foam, use a ball point pen to punch holes corresponding to the location and diameter of each hole. Set and align the replacement deck to the traced outline.



Tape the replacement deck in place. Turn over the deck & paper. Using a pencil, mark each hole onto the underside of the new deck.



Remove the paper. Use a 5/32 inch drill to drill the deck holes from the underside of the deck. Set the deck on the hull. If a hole is off-center a little, elongate the hole with the drill bit.

Attach the deck to the hull to confirm it is a good fit.